

SURVEY FOR
DON RUSSELL
 LAND LOT 207, 4th DIST., 2nd SEC.
 PICKENS COUNTY, GEORGIA

THIS PLAT REPRESENTS THAT TRACT MENTIONED IN DEED
 BOOK 95, PAGE 408-409, PICKENS COUNTY RECORDS.

L.L. 175

L.L. 174

L.L. 206

L.L. 207

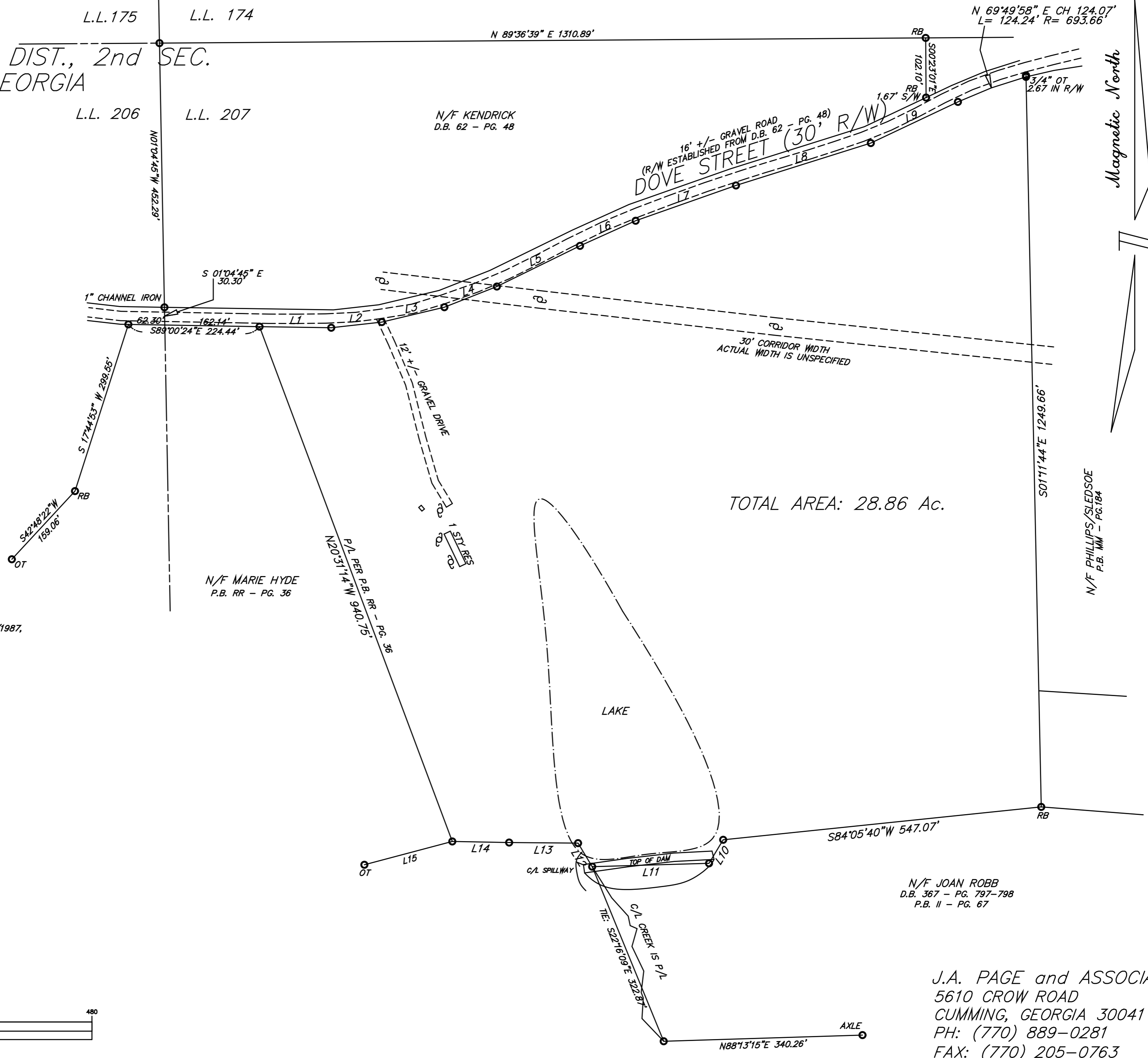
N/F KENDRICK
 D.B. 62 - PG. 48

N/F MARIE HYDE
 P.B. RR - PG. 36

N/F JOAN ROBB
 D.B. 367 - PG. 797-798
 P.B. II - PG. 67

N/F PHILLIPS/SLEDSOE
 P.B. III - PG. 184

| LINE | BEARING | LENGTH |
|------|-------------|---------|
| L1 | S89°08'50"E | 122.69' |
| L2 | N83°37'09"E | 87.01' |
| L3 | N76°37'08"E | 110.06' |
| L4 | N68°30'07"E | 96.53' |
| L5 | N63°55'06"E | 158.33' |
| L6 | N65°42'06"E | 104.44' |
| L7 | N70°37'07"E | 182.00' |
| L8 | N72°32'07"E | 241.84' |
| L9 | N64°42'06"E | 164.84' |
| L10 | S30°58'27"W | 47.00' |
| L11 | S88°21'41"W | 199.99' |
| L12 | N30°59'28"W | 47.00' |
| L13 | N89°30'21"W | 117.90' |
| L14 | N88°54'16"W | 97.25' |
| L15 | S75°08'43"W | 155.62' |



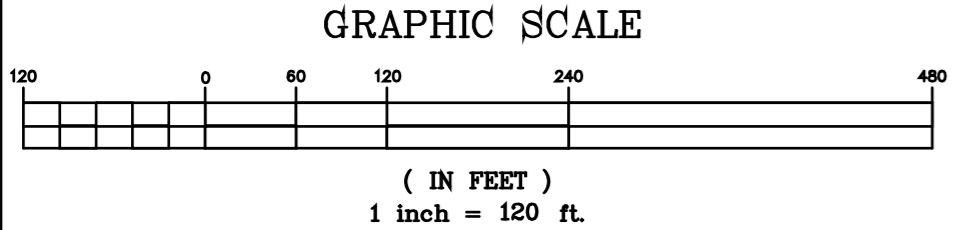
TOTAL AREA: 28.86 Ac.

ACCORDING TO F.I.R.M. MAP #130149B (18), DATED 07/01/1987,
 THIS PROPERTY IS NOT IN A FLOOD HAZARD ZONE.

BOUNDARY TRAVERSE BY TOPCON TOTAL STATION
 POSITION CLOSURE: 1'/15,000'
 ANGLE ERROR: 2" PER STA
 CRANDALL ADJUSTMENT
 PLAT CLOSURE EXCEEDS 1'/50,000'

AI INDICATES ANGLE IRON
 RB INDICATES REBAR
 CT INDICATES CRIMPED TOP PIPE
 OT INDICATES OPEN TOP PIPE
 CM INDICATES CONC. MON.
 P.O. INDICATES POWER POLE
 R/W INDICATES RIGHT-OF-WAY
 P/L INDICATES PROPERTY LINE
 B.L. INDICATES BUILDING LINE
 F.C. INDICATES FENCE
 C.B. INDICATES CATCH BASIN
 W.M. INDICATES WATER METER
 F.H. INDICATES FIRE HYDRANT
 E.P. INDICATES EDGE OF PAVING
 B.O.C. INDICATES BACK OF CURB
 L.L. INDICATES LAND LOT LINE

FIELD DATE: DECEMBER 21, 2006
 PLAT DATE: DECEMBER 26, 2006
 REVISED: JANUARY 11, 2007



J.A. PAGE and ASSOCIATES
 5610 CROW ROAD
 CUMMING, GEORGIA 30041
 PH: (770) 889-0281
 FAX: (770) 205-0763
 PROJ. 44106/44106.DWG